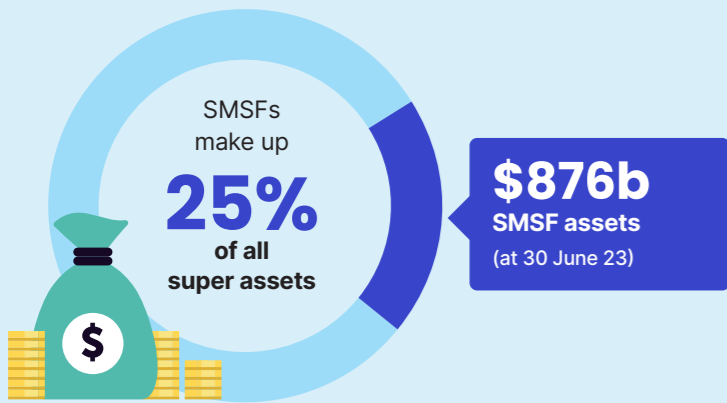




Self-managed super funds

Annual statistics overview 2021-22

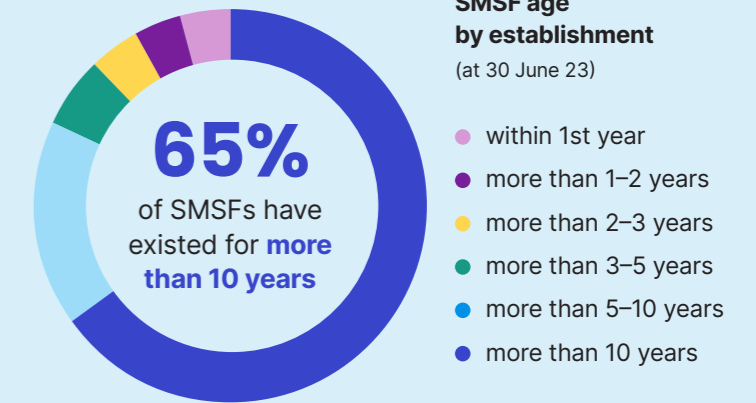
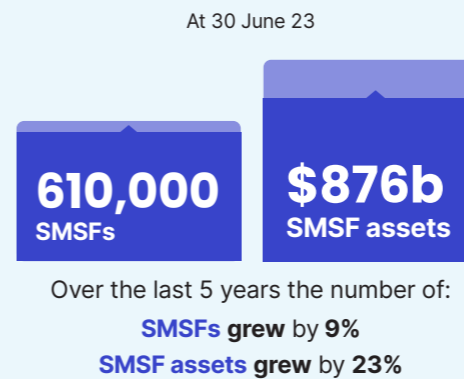
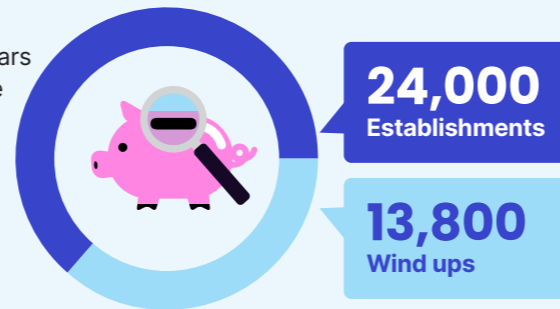
Overview



Establishments and wind-ups each year

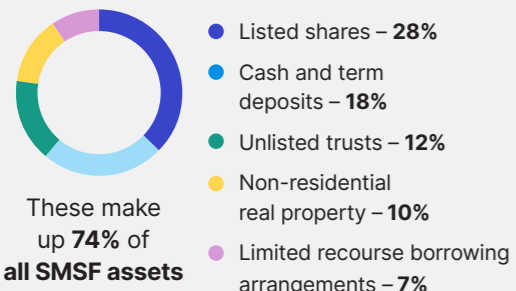
Each year for the 5 years to 30 June 2023 there were on average:

24,000 establishments
13,800 wind-ups

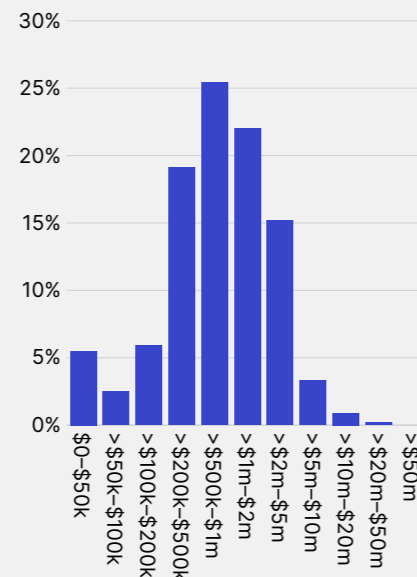


Assets

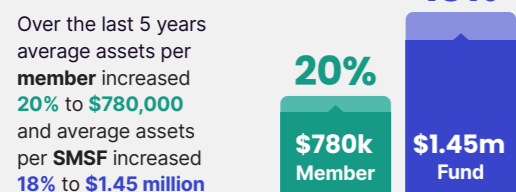
The top 5 assets held by SMSFs



Proportion of SMSFs by asset range



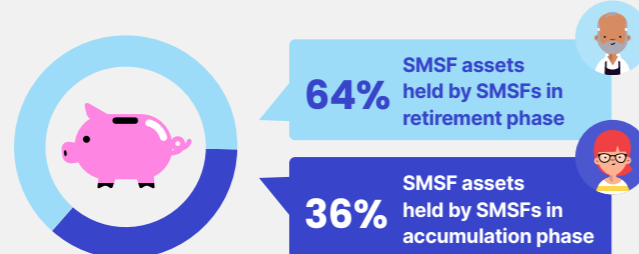
Average balances



Return on assets

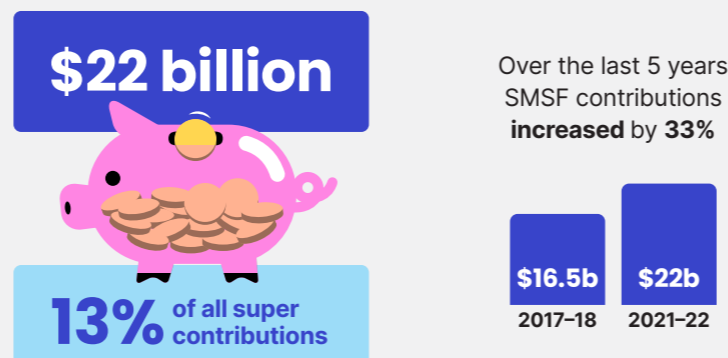


SMSF assets by phase

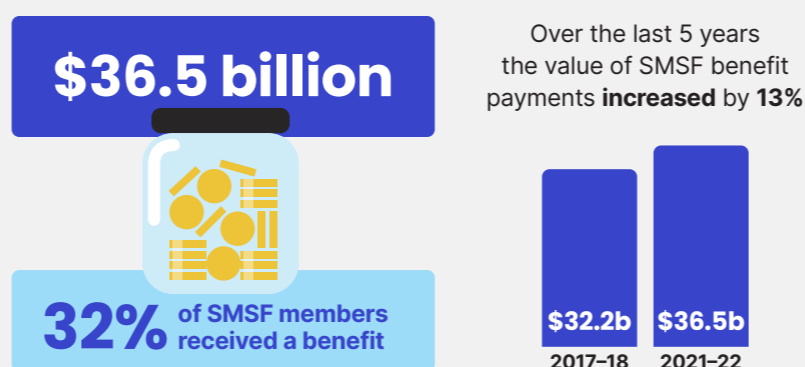


Ins and outs

SMSF contributions

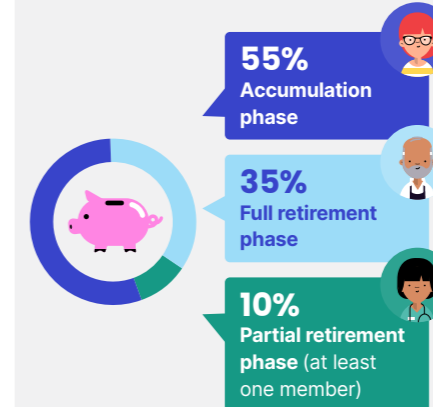


SMSF benefit payments



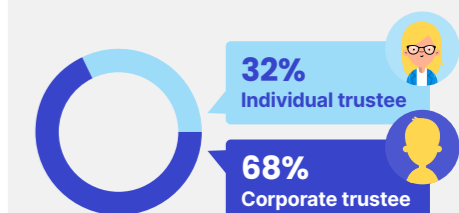
Members

SMSFs by phase



Corporate vs individual trustees

(at 30 June 23)



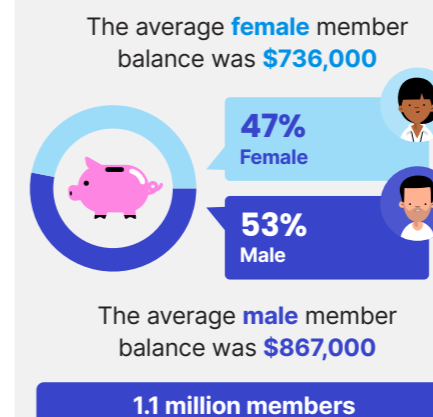
Median age of members

(at 30 June 23)

Median age of all SMSF members was **62 years**



Members by gender



1.1 million members

The main source of data is 2021-22 SMSF annual returns. In addition, information is included for 2022-23 for registrations, wind-ups, total population and demographic data, estimated total SMSF assets and asset allocation. All data has been taken at a point in time and may have changed due to late lodgments. Data on previous publications may no longer be accurate.