

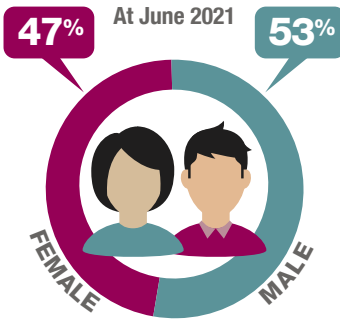


Australian Government
Australian Taxation Office

Self-managed super funds

Members by gender 2019–20

KEY STATISTICS

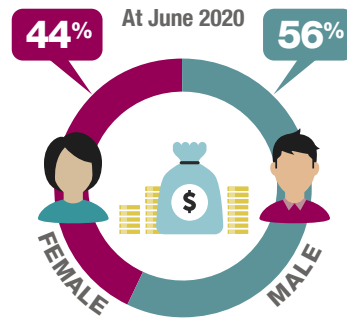


At June 2021, there was an even distribution of male and female members up to age 35

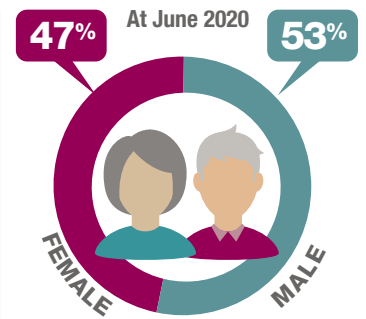


and a higher proportion of males than females aged over 70

Over 1.1 MILLION SMSF members



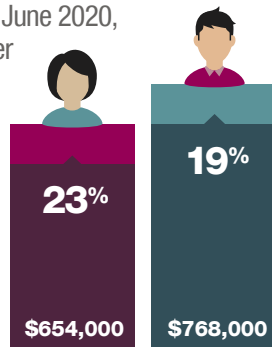
TOTAL member holdings of SMSF assets



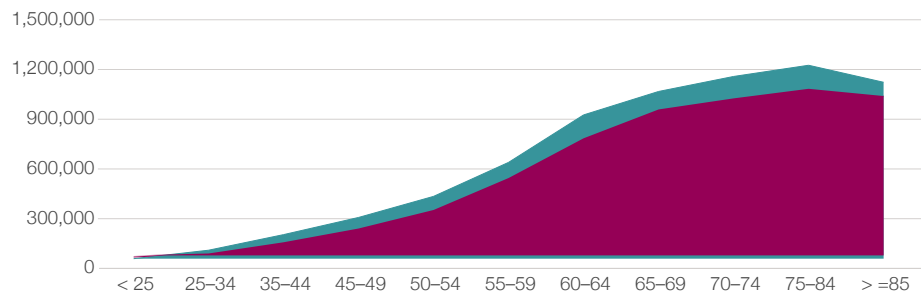
SMSF members in retirement phase

SMSF MEMBER BALANCES

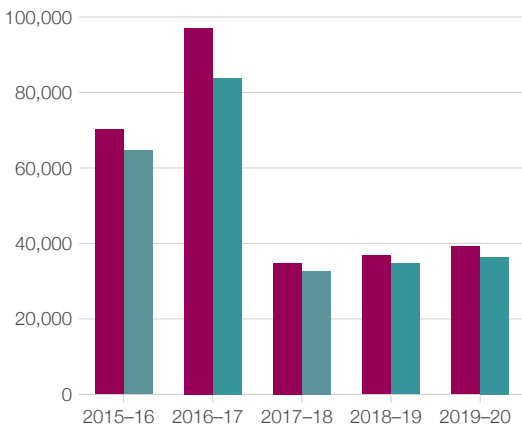
Over the five years to June 2020, female average member balances increased by 23% to **\$644,000** while male average member balances increased by 19% to **\$768,000**



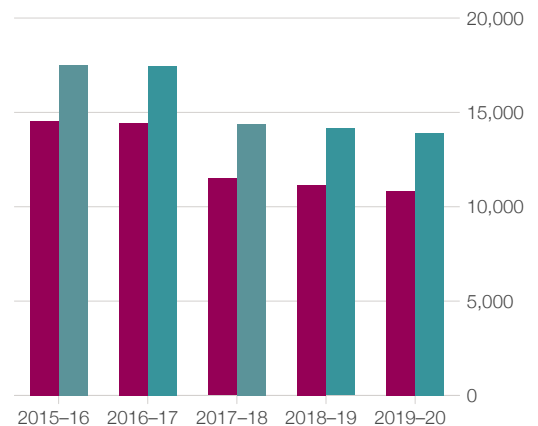
Males across all age groups (except those under 25) had higher average SMSF member balances than females at June 2020



CONTRIBUTIONS TO SMSFs FOR MALE AND FEMALE MEMBERS



Over the five years to June 2020, average member contributions for both male and female members dropped by 44%



Average MEMBER contributions increased to **\$39,200** or by 6% for females and to **\$36,400** or by 5% for males from 2018–19 to 2019–20



Average EMPLOYER contributions dropped to **\$10,800** or by 3% for females and to **\$13,900** or by 2% for males from 2018–19 to 2019–20

