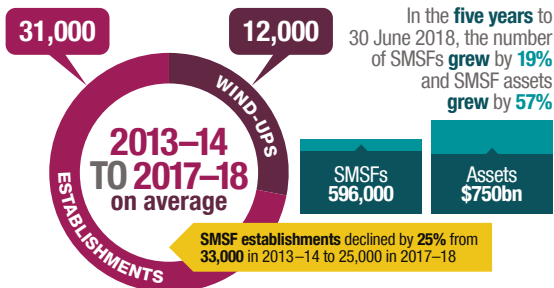


Self-managed super funds

Annual statistics overview 2016–17

SMSF OVERVIEW

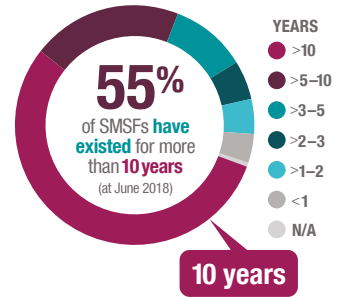
Establishments and wind-ups



SMSFs make up 28% of all super assets

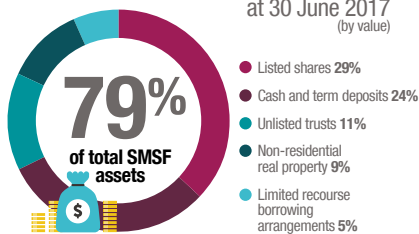


Services used to meet SMSF tax and regulatory obligations

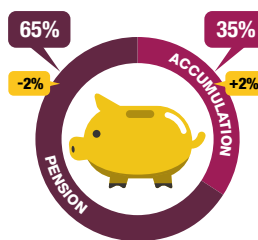
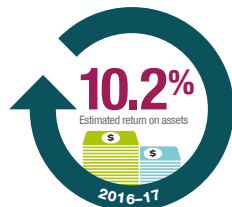


ASSETS

The top five assets held by SMSFs at 30 June 2017 (by value)

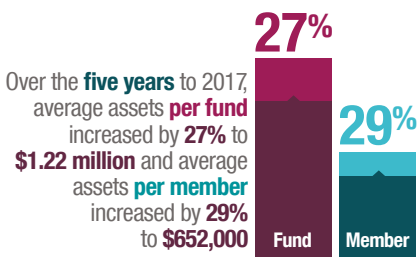
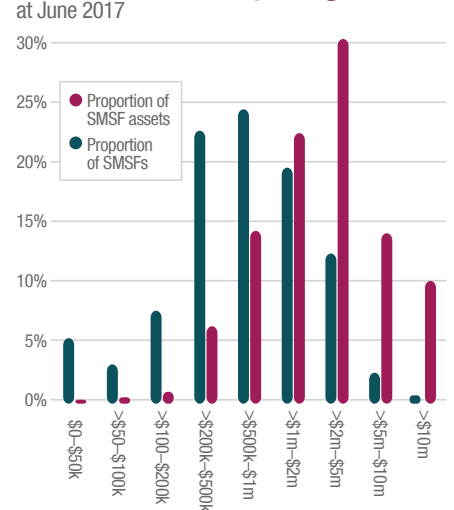


SMSFs achieved positive returns for the past five years



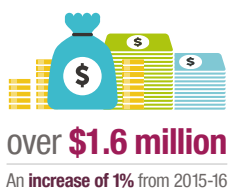
There was a **2% change** in SMSF assets in either pension or accumulation phase in the year to 30 June 2017

SMSF balances by range at June 2017

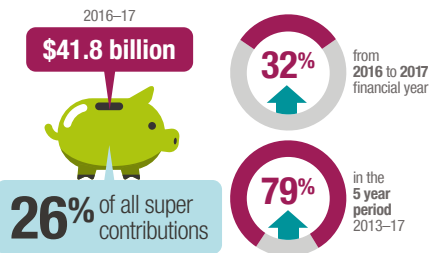


INS & OUTS

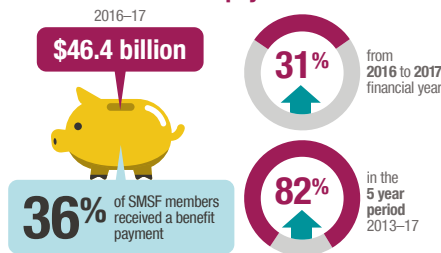
At 30 June 2017, **9% of members** had an SMSF closing account balance



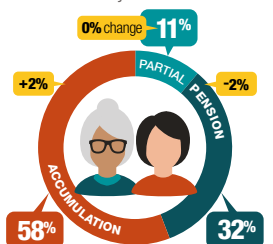
SMSF contributions 2016–17



SMSF benefit payments 2016–17



SMSFs in accumulation vs pension phase 2% shift in the year to 30 June 2017

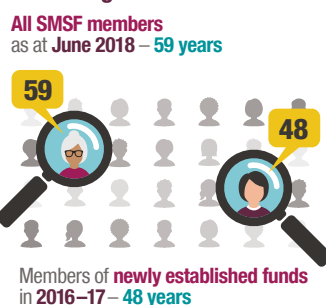


LET'S TALK ABOUT SMSFS AND THEIR MEMBERS

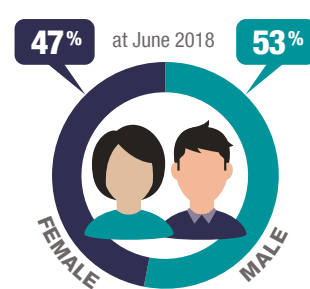
Corporate vs individual trustees



Median ages of members



Over 1.1 MILLION SMSF members



Average member balance over the five years to 30 June 2017 increased to

