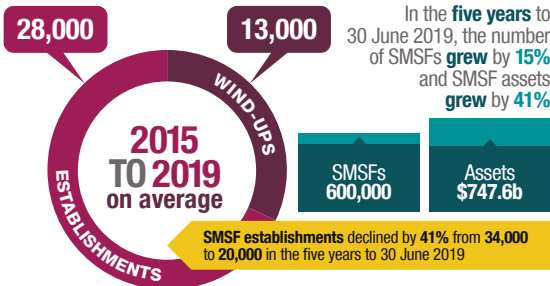


Self-managed super funds

Annual statistics overview 2017-18

SMSF OVERVIEW

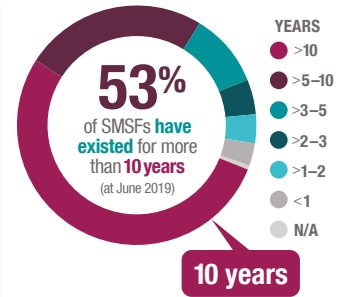
Establishments and wind-ups



SMSFs make up 26% of all super assets

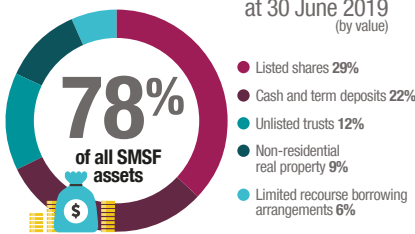


Services used to meet SMSF tax and regulatory obligations

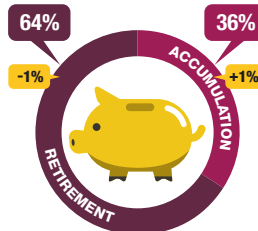


ASSETS

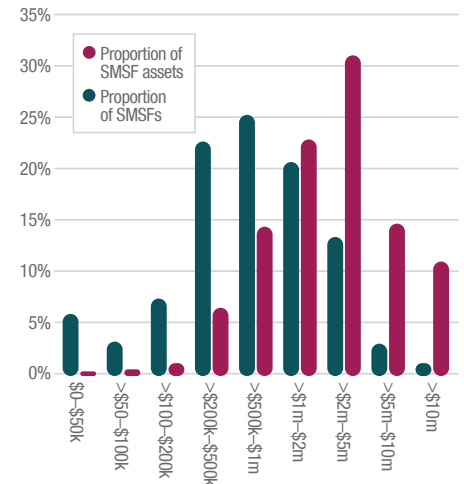
The top five assets held by SMSFs at 30 June 2019 (by value)



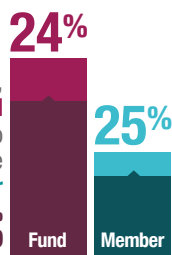
SMSFs achieved positive returns for the past five years



SMSF balances by range at June 2018



Over the **five years** to 2018, average assets **per fund** increased by **24%** to **\$1.27 million** and average assets **per member** increased by **25%** to **\$679,000**

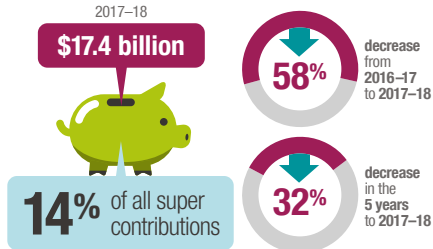


INS & OUTS

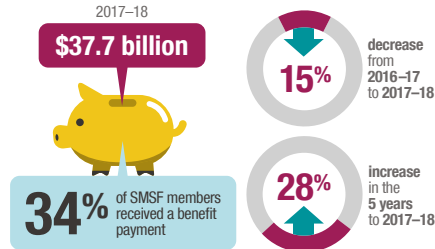
At 30 June 2018, **9% of members** had an SMSF closing account balance



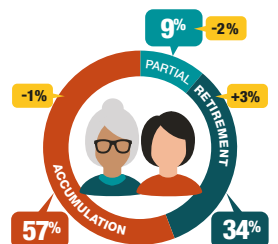
SMSF contributions 2017-18



SMSF benefit payments 2017-18

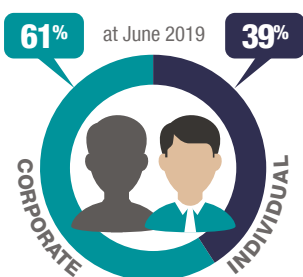


SMSFs in accumulation vs retirement phase at 30 June 2018



LET'S TALK ABOUT SMSFS AND THEIR MEMBERS

Corporate vs individual trustees

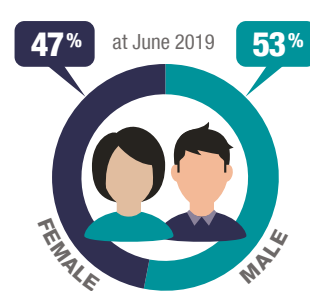


Median ages of members

All SMSF members as at **June 2019** median age is **60 years**



Over 1.1 MILLION SMSF members



Average member balance over the five years to 30 June 2018 increased to

