

Self-managed super funds

Annual statistics overview 2018–19

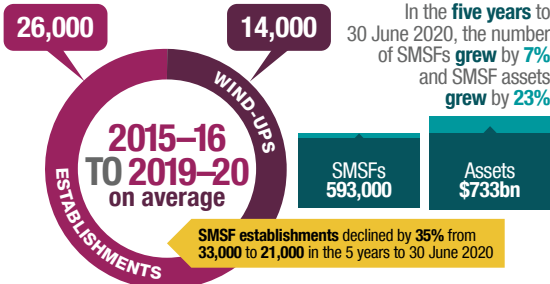


Australian Government

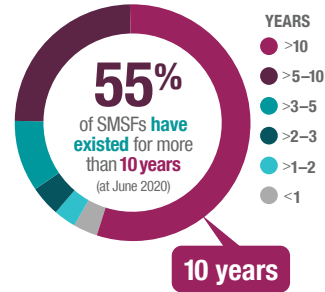
Australian Taxation Office

SMSF OVERVIEW

Establishments and wind-ups



SMSFs make up 26% of all super assets

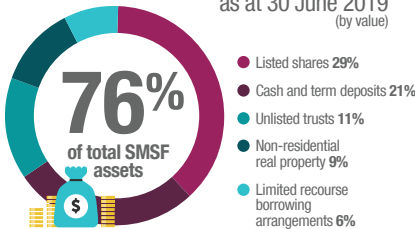


Services used to meet SMSF tax and regulatory obligations in 2018–2019

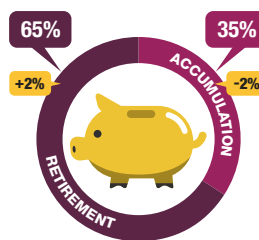


ASSETS

The top five assets held by SMSFs as at 30 June 2019 (by value)

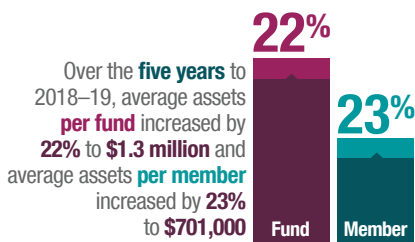
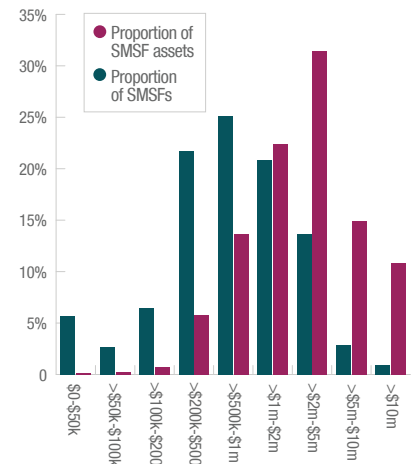


SMSFs achieved positive returns for the past five years



There was a **2% change** in SMSF assets in either retirement or accumulation phase from 2017–18 to 2018–19

Proportion of SMSFs by asset range at June 2019

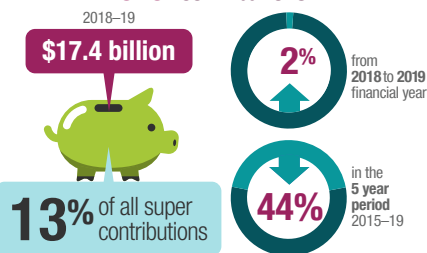


INS & OUTS

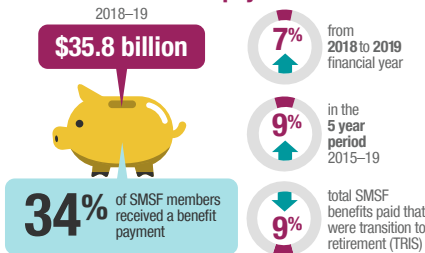
At 30 June 2019, **10% of members** had an SMSF closing account balance



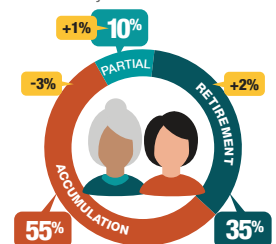
SMSF contributions



SMSF benefit payments



SMSFs in accumulation vs retirement phase in the year to 30 June 2019



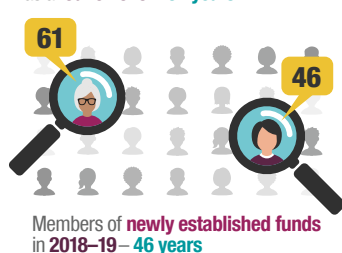
LET'S TALK ABOUT SMSFS AND THEIR MEMBERS

Corporate vs individual trustees

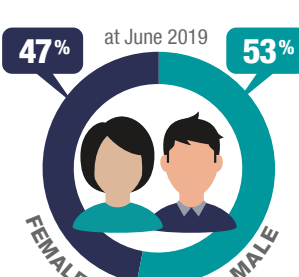


Median ages of members

All SMSF members as at June 2020 – **61 years**



Over 1.1 MILLION SMSF members



Average member balance over the five years to 30 June 2019 increased to

